

# ROLLER DRAWER KITCHEN



Part Number: **RDKNA1355**  
Product **ROLLER DRAWER KITCHEN 1355 NORTH AMERICA**  
Description:  
Suited to **SINGLE/DUAL CAB UTILITY VEHICLES**  
vehicle/s:

PLEASE NOTE THE FOLLOWING:

- ◆ This product must be installed exactly as per these instructions using only the hardware supplied.
- ◆ In the event of damage to any component, contact your nearest authorised ARB stockist, Repairs or modifications must not be attempted.
- ◆ Do not remove labels from this product.
- ◆ This product or its fixing must not be modified in any way.
- ◆ The installation of this product may require the use of specialized tools and/or techniques.
- ◆ It is recommended that this product is only installed by trained personnel.
- ◆ These instructions are correct as at the publication date. ARB Corporation Ltd. cannot be held responsible for the impact of any changes subsequently made by the vehicle manufacturer.
- ◆ During installation, it is the duty of the installer to check correct operation/clearances of all components.
- ◆ Some components are heavy (17kg+) and require a 2 person lift.
- ◆ Work safely at all times.
- ◆ Unless otherwise instructed, tighten fasteners to specified torque.

## ARB 4x4 ACCESSORIES

### Corporate Head Office

42-44 Garden St  
Kilsyth, Victoria  
AUSTRALIA 3137

Tel: +61 (3) 9761 6622  
Fax: +61 (3) 9761 6807

Australian enquiries  
North & South American enquiries  
Other international enquiries

[sales@arb.com.au](mailto:sales@arb.com.au)  
[sales@arbusa.com](mailto:sales@arbusa.com)  
[exports@arb.com.au](mailto:exports@arb.com.au)

**[www.arb.com.au](http://www.arb.com.au)**

# GENERAL CARE AND MAINTENANCE

By choosing an ARB kitchen you have made a wise investment in a product that will give you many years of service.



- To keep your investment looking good it is recommended to clean your kitchen with a soft cloth and suitable stainless steel cleaning solution after each use. Do not use abrasive cleaning solutions or cloths as this will dull the surface and leave it susceptible to discolouring and corrosion.
- It is recommended that following exposure to salt air/spray and or other contaminants, the kitchen be thoroughly cleaned to prevent corrosion.
- As part of any Pre Trip Preparation, or on an annual basis, it is recommended that a thorough visual inspection of the vehicle is carried out, making sure that all bolts and other components are torqued to the correct specification. Replace any components as necessary. This service can be performed by your local authorized ARB Stockist.
- Servicing of the gas cooking unit should be carried out by a licensed plumber or authorised Thetford agent.

## FITTING REQUIREMENTS

### REQUIRED TOOLS FOR FITMENT OF PRODUCT:

BASIC TOOLS KIT	DRILL AND DRILL BITS
-----------------	----------------------

### HAVE AVAILABLE THESE SAFETY ITEMS WHEN FITTING PRODUCT:

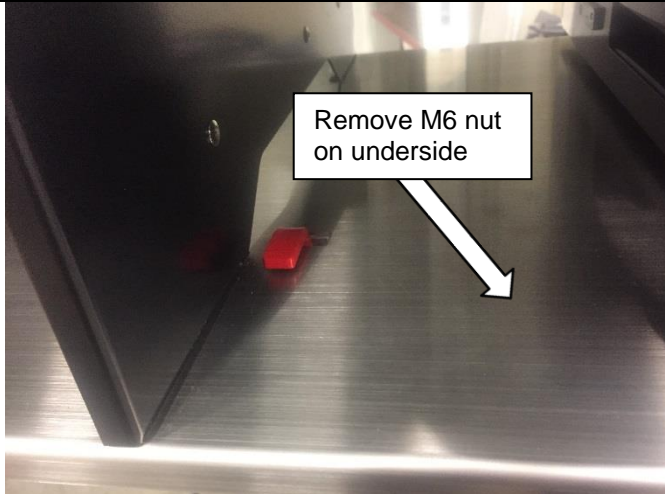
Protective eyewear		Hearing protection	
--------------------	---	--------------------	---

**NOTE: 'WARNING' notes in the fitting procedure relate to OHS situations, where to avoid a potentially hazardous situation it is suggested that protective safety gear be worn or a safe work procedure be employed. If these notes and warnings are not heeded, injury may result.**

### FASTENER TORQUE SETTINGS:

SIZE	Torque Nm	Torque lbft
M6	9Nm	7lbft
M8	22Nm	16lbft
M10	44Nm	32lbft
M12	77Nm	57lbft

## PREPARE KITCHEN FOR INSTALLATION



Before installing into the vehicle, the kitchen module must be removed from the cabinet.

Remove 2<sup>nd</sup> stage lock out lever by removing the M6 nylock nut on the lever pivot.

Retain the lever and nut for re-assembly procedure.







Remove small drawer by pushing the red drawer latch to the side and pulling out the drawer. Then push black lever on each drawer slide. Note, one lever is to go up and one lever is to go down. Pull the drawer out once the lever is depressed.

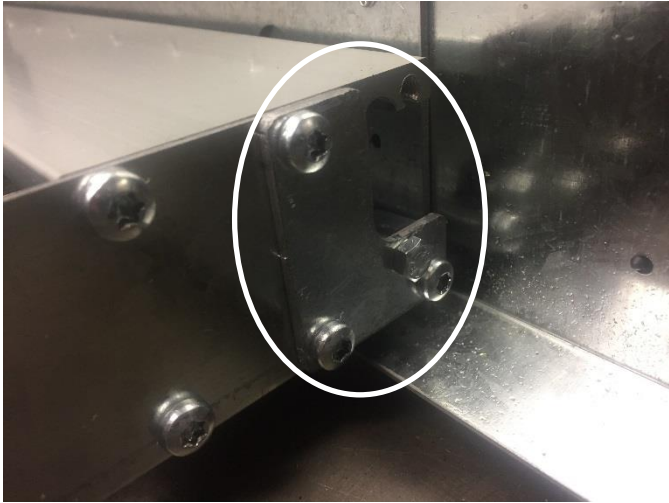


Remove the drawer slam latch from the front face by removing the 4 phillips head screws with washers under the heads located behind the front face.



Open the swing out hob by pulling the red release lever near the hinge, with your other hand swing out the hob.

	<p>Using a 4mm allen key, remove 2 x M6 capscrews located near the 2 plastic slides on the lower kitchen panel.</p> <p>Close the hob after removing these 2 screws.</p> <p>Retain screws and nuts for re-assembly process.</p>
	<p>Using a 4mm allen key, remove 2 x M6 capscrews located behind the front face on the lower kitchen panel.</p> <p>Retain screws and nuts for re-assembly process.</p>
	<p>Remove the 2 x M8 bolts located inside the hinge box.</p> <p>Retain bolts, washers and nuts for re-assembly process.</p> <p>With 2 people, lift the kitchen assembly up and away from the inner trolley.</p>
	<p>Using a 4mm allen key remove the 10 x M6 countersunk screws securing the top carpet panel to the drawer.</p> <p>Lift the carpet panel off the drawer.</p>



Using a T27 torx bit, remove the 3 outer screws from the end of the extrusion inside the drawer.

Remove the 2 small "L" shaped plates with the plastic wedge still attached. (LH & RH)

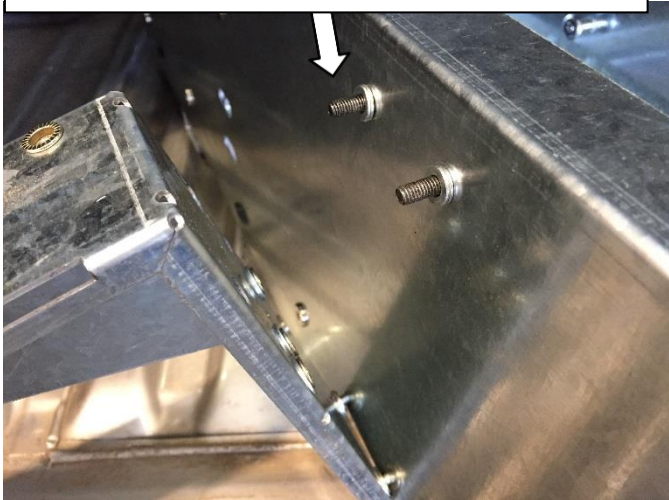
Remove the inner and outer trolley assembly from the cabinet.



At this point, refer to the vehicle specific side floor kit installation instructions for the appropriate details on hat mounting positions on the base of the cabinet.

Note that the kitchen cabinet must have 4 x bolts securing it the vehicles floor, (2 bolts in each hat mount).

Install 2 washers between drawer and bracket



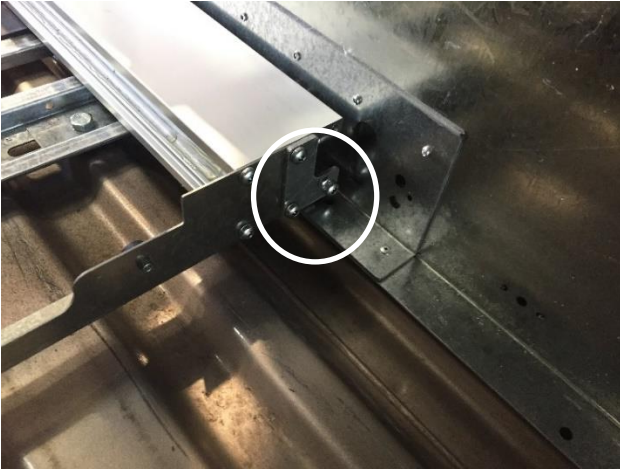
Note that the installation of the SBRK-1 will be different when installing the RDK.

Install 2 M6x16 black pan head screws from inside the drawer cabinet.

Place 2 washers over the screws on the outside of the cabinet.

Install the bracket over the screws then secure using 2 M6 nuts.

## INSTALLATION PROCEDURE



Re-install the inner and outer trolley assembly to the cabinet.

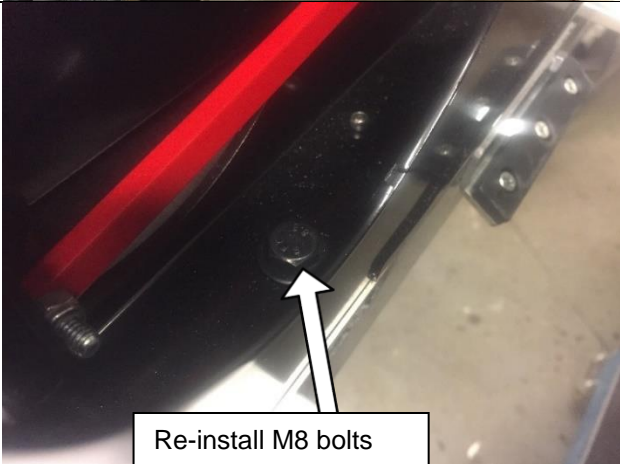
Re-install the 3 outer screws to the end of the extrusion inside the drawer securing the 2 small "L" shaped plates with the plastic wedge still attached. (LH & RH)



Fully extend the trolley ready to accept the kitchen assembly.

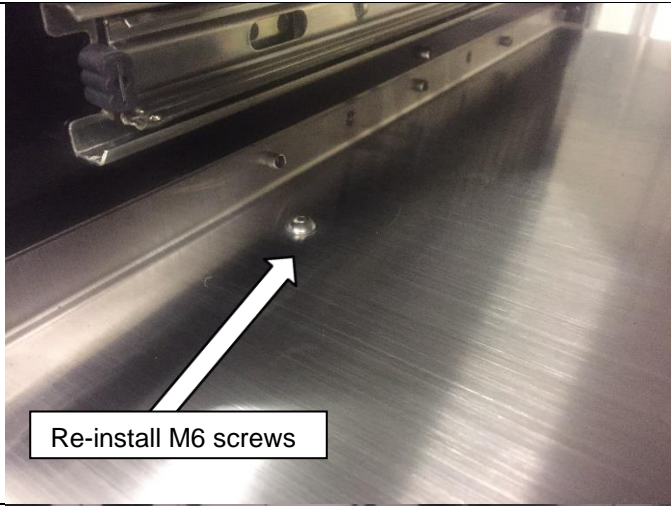


Using 2 people place the kitchen assembly onto the inner trolley.



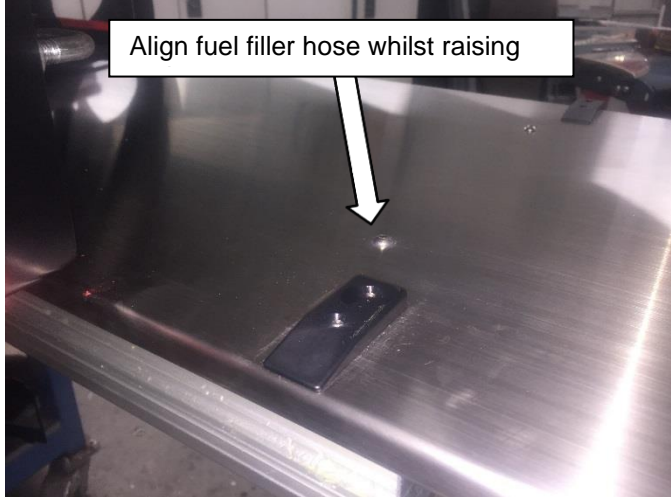
Re-install the M8 bolts with a washer under the head inside the hinge box. Install the M8 nuts to the underside.

Do not torque at this stage.




Re-install the M6 screws and flange nuts to the lower kitchen panel behind the drawer face.

Do not torque at this stage.



Re-install the M6 screws and flange nuts to the lower kitchen panel under the hob.

At this point ensure that the kitchen is centred on the trolley, then tighten the 6 securing bolts to the specified torque.

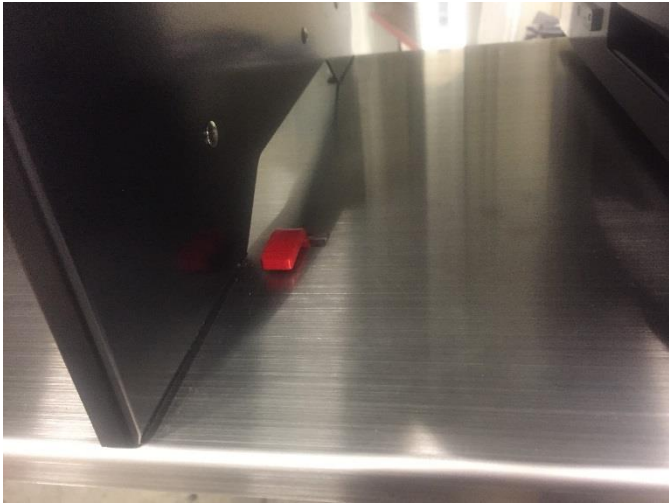
 M6, 9Nm. M8 22Nm.



Re-install the drawer slam latch to the front face of the drawer, using the 4 screws with washers removed earlier.



Carefully align the drawer runners on the small drawer, then push the drawer back to the red drawer latch. Rotate the latch down and push the drawer all the way in to reset the runners.



Re-install 2nd stage lock out lever by placing the lever over the M6 bolt and securing with the M6 nylock nut on the lever pivot.

Adjust the M6 nut so that the lever has minimal sideways movement but can rotate freely.



Check operation of the kitchen by:

- Pulling out the kitchen, ensuring the kitchen locks in the fully open position and can only be closed by manually operating the second stage lock out lever.
- Pushing the drawer latch to the side and pulling out the drawer.

Return drawer to its closed positions and return the entire unit to the drawer.